



SMOKE SIGNALS

Lakeside Academy

December 2024

Issue # 4

Sasquatch Families,

This year's most festive month is upon us. December is filled with more time for family celebrations and mirth. For our families of the Jewish faith, we wish you all a most happy Hanukkah! May your candles burn extra brightly this season. Many of our families are busily preparing for the imminent arrival of Santa Claus. No matter your background, we wish you all a Merry Christmas and a Happy Holiday season.

Besides the preparation for the upcoming holidays, our students are continuing to "Be Determined" in our classrooms as we are in the midst of our Progress Monitoring 2 test from the state. These tests help provide a "snap shot" of data for our teachers to continue focusing on the needs of our students. Our incredible teachers are doing amazing work for our students and families. Our amazing office and support staff are also working incredibly hard to support our students. We will be working hard this month to show our gratitude for the amazing work of our entire staff.

I suspect that our hallways will be filled with a lot of spirit this month. Please see inside our issue of "Smoke Signals" to see the various fun spirit days we have to celebrate the holiday season.

The weather has grown chilly. If you're like me, there's nothing quite as fulfilling as a warm fire on a cold night deep in Sasquatch Country. From deep in the heart of the Beacon Lake forests, these are our latest Smoke Signals!

Sincerely,

Dr. Gates



scan here to start
earning money for
Lakeside Academy



*Upcoming
Events!*

Dec 02 - Pajama & Blanket Drive for Wolfson Children's Hospital begins

Dec 04 - No early release (3 pm dismissal)

Dec 05 - Spelling Bee

Dec 11 - No early release (3 pm dismissal)

Dec 18 - No early release (3 pm dismissal)

Dec 19 - PTO Meeting @ 9am

**Dec 20 - Second Quarter/First Semester Ends
Early release (2 pm dismissal)**

Dec 23 ~ Jan 2 - Winter Break (School Resumes on Jan 6)





JOIN US FOR SOME FUN AS WE CELEBRATE THIS FESTIVE TIME OF YEAR!

Dress up days are as follows...

- Wednesday, December 4th - Wear your favorite holiday or winter shirt
- **Thursday, December 5th – Wear as much red as you can! (SANTA)**
- **Monday, December 9th – Wear green from head to toe!**
- Wednesday, December 11th – Wear festive hat, headband, ears, headgear...
- Thursday, December 12th – Kwanza – Mad for Plaid – wear plaid
- Friday, December 13th – Merry and Bright – wear something that lights up – IF YOU HAVE DONTAED PJs or BLANKET, you may wear PJs too!!
- Tuesday, December 17th – Winter Wonderland – WHITE OUT! Dress all in white!
- Wednesday, December 18th – Baby it's Cold Outside – wear your ugliest Grinch/holiday sweater or t-shirt
- **Thursday, December 19th – Happy Hanukkah – wear blue and white**

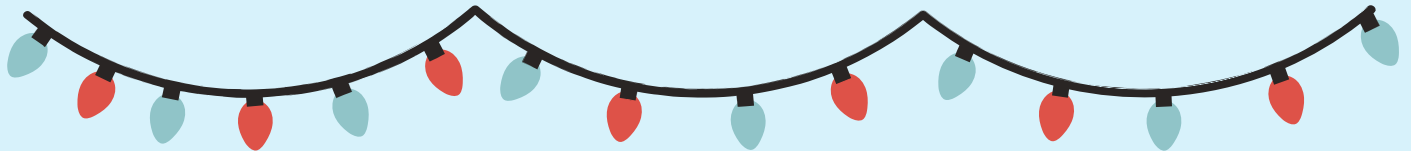


HAPPY
KWANZAA





*Help support the Arts
at Lakeside Academy*



An Easy Way to Support Our Classroom!

What a wonderful community of learners we have in our classroom this year!

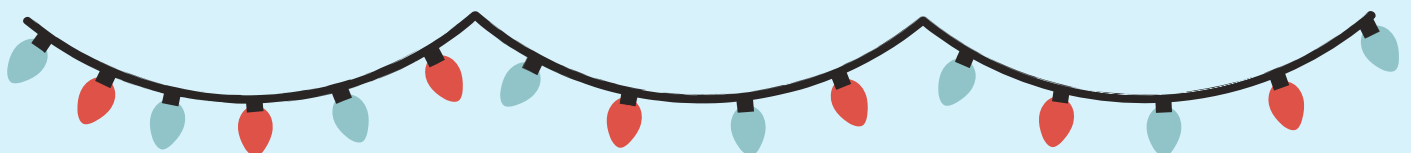
I'm so excited to help our students learn and grow.

I have registered our classroom on DonorsChoose, an amazing website where individuals can contribute to public schools. Throughout the year, I will post requests for resources that will help make your child's time at school even more engaging, dynamic, and enriching.

Please spread the word about our classroom page (and contribute if you can)!

~ Ms. Restrepo-Irizarry

<https://www.donorschoose.org/lakeside-art-ceramics>





Physical education corner

Parents, please take a look at the increased risks associated with wearing Crocs. The pictures below are action shots of how the foot shifts and causes increased risks for ankle sprains, Achilles injuries, and potential long-term impacts in stability and gait. Podiatrists do not recommend Crocs for walking, exercising, or all-day use. As we move into units like basketball and soccer, student wearing ANY inappropriate footwear (including slippers, slides, sandals, cowboy boots, etc.) may be required to utilize alternative floor-based exercises during our unit and the skills that are assessed this quarter may not be visible, thus affecting the students Physical Education progress/standard mastery.



Podiatrists generally don't recommend Crocs for walking, exercising, or working in, but they can be okay for certain situations:

- Arch support: Crocs lack arch support, which can lead to foot pain.
- Heel security: Crocs don't secure the heel well, which can cause toes to grip and lead to foot problems.
- Stability: Crocs aren't very stable and can be wide, making them less likely to grip the foot.
- Moisture: Crocs don't wick away moisture well, which can lead to blisters.
- Plastic construction: The plastic construction of Crocs can make feet sweaty and smelly.
- All-day use: Crocs aren't meant for all-day use, especially for active people.
- Children: Children should avoid Crocs, especially if they're very active.





Physical education corner

Proper and safe footwear and attire is a daily PE expectation and must be met in order to receive daily Leadership bracelet or our LEADER in PE Awards.

Also, please make sure that children are coming to school with layers for outside PE and water bottles. As the weather conditions fluctuate, it is best to be prepared!

Quarter 2 Activities and Skills Include:

- Fitness Warm up/Cool Down (Sneaky Fitness games, Tabata, Planksgiving Challenges)
- Resolving Conflicts, Cooperation, Celebrating Success and Positive Commenting
- Bouncing and Catching various objects (BrainBall)
- Rolling and Using Skill Cues and Feedback to Improve Performance (Bowling)
- Using Dominant/Non-dominant Hands/Feet (all)
- Underhand Throwing (Cornhole)
- Dribbling Hands and Feet and Offense and Defense (Basketball and Soccer)
- Heart Rate, Intensity, Personal Strengths and Challenges
- Formulate a Fitness Goal and Plan (grade 5)
- Health Goals: Understanding Basic Nutrition and Goal Setting

LEADER IN PE – Citizenship and Putting First Things First



MEDIA CENTER NEWS



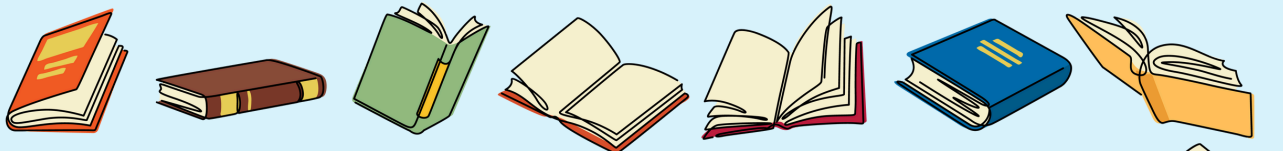
Click above for the SSYRA Jr. checklist



The students are making and creating in Media and are in need of materials! If possible, please donate materials from our [Amazon wish list](#). We are also looking for everyday household items for projects. Please click [here](#) to view list.

Thank
you!

The Media Center would like to say THANK YOU for all the amazing donations you have sent in for our Makerspace and library space! We appreciate your generosity!

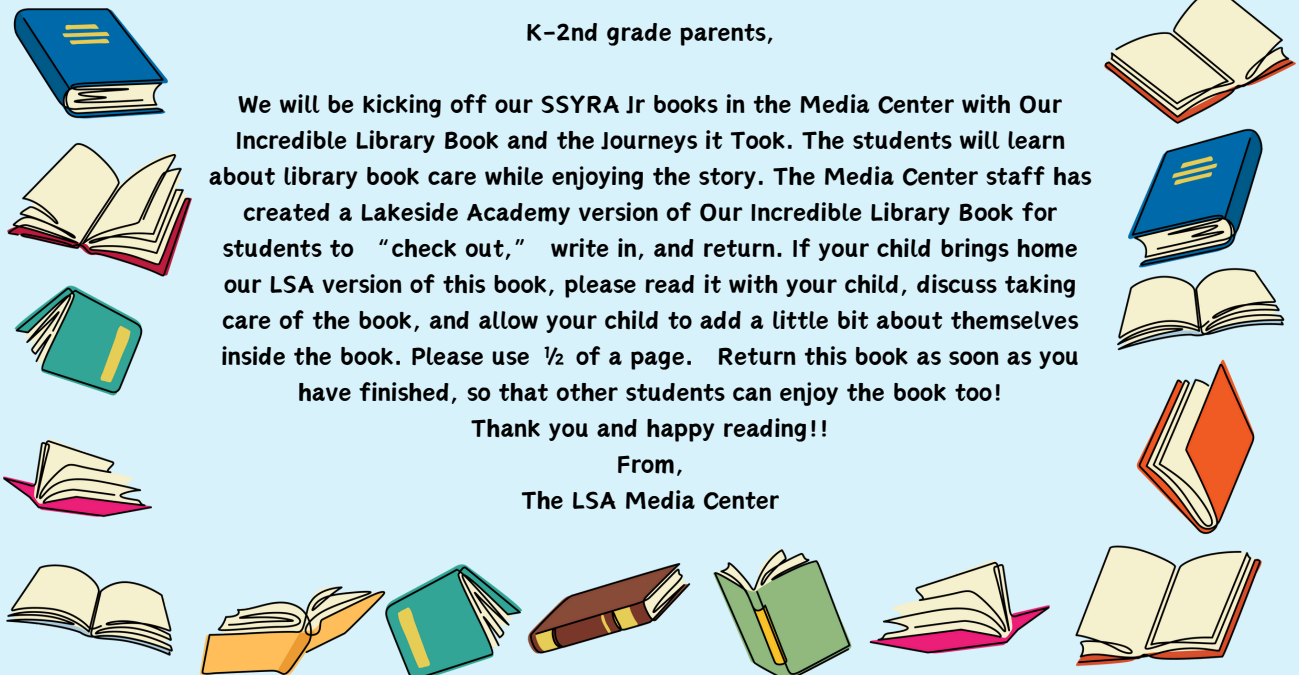


K-2nd grade parents,

We will be kicking off our SSYRA Jr books in the Media Center with Our Incredible Library Book and the Journeys it Took. The students will learn about library book care while enjoying the story. The Media Center staff has created a Lakeside Academy version of Our Incredible Library Book for students to "check out," write in, and return. If your child brings home our LSA version of this book, please read it with your child, discuss taking care of the book, and allow your child to add a little bit about themselves inside the book. Please use $\frac{1}{2}$ of a page. Return this book as soon as you have finished, so that other students can enjoy the book too!

Thank you and happy reading!!

From,
The LSA Media Center








Lakeside SSYRA Readers



These students have read all 15 books in their SSYRA grade level list!

 SSYRA Junior	 Grades 3-5	 Grades 6-8
<p>Dominic Masitti Eloise Read Sean Dalton Alma Sancho Ava Norman Addison Chase Marley Flood Brooklyn Darmody Deacon Halladey Sarahmithurla Prabhu Claire Jiang Ty Thupthai Holden Hendrickson Siddhant Parbhoo Archi Patel Gyan Patel Clemintine Zimmer Lily Dell</p>	<p>Hemkrish Satheeshkunar Isabel Mathew</p>	

Media Center Kindness Drawing Winners

These students were caught spreading kindness throughout our Media Center!

Every time a student is caught spreading kindness in the library, they enter our Bucket Filler Drawing. At the end of each month, one student from each grade level (K-5) will be pulled as our winners!

Kindergarten

Cecilia
Thompson

1st Grade

Charlotte
Burkley

Second Grade

Dylan
Quan

Congratulations, winners!!

3rd Grade

Sriyan
Kongara

4th Grade

Emerson
Bennett

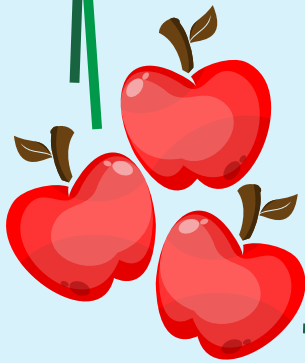
5th Grade

Jaslynn
Plants

Thank you for spreading kindness!

**S
A
S
Q
U
A
T
C
H

C
A
F
E**

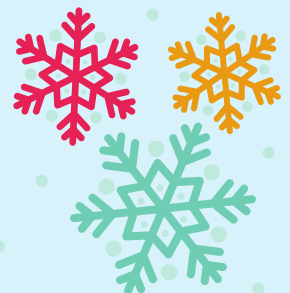


*Papa John's
Pizza
available on
Wednesdays
\$2.00/slice
a la carte*

Clinic Corner



Health screenings have been
rescheduled for
December 12 & 13

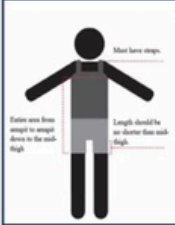


Middle School News

DRESS CODE POLICY

CELL PHONE POLICY

Dress Code Policy



ALL STUDENTS

Clothing must cover areas from one armpit to the other armpit, down to the mid-thigh. Tops must have shoulder straps and be long enough to adequately cover the waistline and not expose the midriff.

Reminders


- Clothing, piercings and accessories displaying profanity, violence, discriminatory messages, sexually suggestive phrases, symbols or phrases of alcohol, tobacco or drugs is unacceptable.
- Pajamas shall not be worn as exterior clothing on campus.
- Head gear, including but not limited to caps, hats, bandanas, and/or sunglasses should not be worn indoors.
- Students must wear shoes with backs that are safe for the learning environment. Bedroom slippers are prohibited.
- Rips or tears in clothing above the mid-thigh must not expose skin.

In accordance with statutory requirement F.S. 1006.07 (students are prohibited from wearing clothing that exposes underwear or that exposes body parts in an indecent or vulgar manner) enforcement will focus on positive guidance without embarrassment to the student and should not disrupt the educational process.

Page 14 in the St Johns County School District Code of Conduct

Phone Policy

Expectation: Upon entering school, phones and other wireless communication devices must be turned off and stored in student's backpack, purse, or locker. To assist students in maintaining academic focus, the device shall not be used during the school day without administrative approval.



Recording other students and staff is PROHIBITED

Failure to put phone away after teacher reminder will result in discipline consequences including confiscation of the device or loss of privilege to possess such a device on school campus as outlined in the Student Code of Conduct.

When there is reasonable suspicion that a student has used a cell phone in violation of the Code of Conduct or other school rules, or for an unlawful purpose, the school administration may search the phone's call logs, voice messages, text messages, photographs and any other applications in its investigation of the suspected violations.

Students can contact parents/guardians from a school phone if the need arises throughout the academic day.

Page 26/27 in the St Johns County School District Code of Conduct

Middle School PE Update

The locker rooms are complete and all middle school PE students have been assigned a locker and been given a lock in the locker room. Dressing out for class and wearing athletic footwear is an expectation. If a uniform still needs to be purchased for your child, please use this link to do so.

[PURCHASE UNIFORM HERE](#)

Please reach out to Coach Martel with any questions or concerns. We appreciate your support and look forward to more fun activities ahead!



Middle School News



~ ALL MIDDLE SCHOOL STUDENTS ~

Please bring a set of headphones to keep in your backpack, for testing as well as classroom assignments.

Thank you!



Middle School News

What is Bullying?

St. Johns County School District defines bullying (including cyberbullying) as:

Systematically and chronically inflicting physical hurt or psychological distress on one or more students. It is unwanted and repeated written, verbal, or physical behavior, including any threatening, insulting, or dehumanizing gesture, by an adult or student, that is severe or pervasive enough to create an intimidating, hostile, or offensive educational environment; cause discomfort or humiliation; or unreasonably interfere with the individual's school performance or participation.

Cyberbullying means bullying through the use of technology or any electronic communication.

Bullying is a common term used today, but for a behavior to reach the level of bullying as defined, **it must meet three criteria:**

1. The bullying behavior must be repeated.
2. The behavior must be intentional, meaning the person is purposefully targeting someone to cause them distress or harm.
3. There must be an imbalance of power between the target and the aggressor.

Is Your Child Being Bullied?

While many actions involve aggressive behaviors and need to be addressed, not all meet the criteria of bullying. The following table illustrates the differences between bullying and other aggressive behaviors.

Conflict	Happens occasionally A disagreement—not intentional targeting Power is equal—both are engaged in the conflict Wants resolution to the problem
Teasing	Teasing is innocent in motive—not intentional targeting Mutual back and forth banter It is not ongoing—it discontinues when the person being teased objects
Bullying	Behavior is repeated Intentionally targeting someone Power is NOT equal No effort by the aggressor to solve the problem

Are there other signs that bullying is occurring? Does your child:

- Not want to go to school in the morning? Complain of stomach or headaches?
- Seem sad/depressed, have mood swings? Not sleeping well?
- Declining grades, loss of interest in schoolwork, or not wanting to go to school.

Reporting Bullying

There are different methods for reporting suspected bullying incidents.

- Report the bullying directly to the school by phone or email.
- Make a report in person at the school.
- Use the online reporting form located on the district's website at www.stjohns.k12.fl.us/ under the family section. This online form will be forwarded to the school so an investigation can begin.

What To Do If Your Child is Being Bullied

- Be supportive and gather information about the suspected bullying (who, what, where, when).
- If your child is being cyberbullied, save the evidence, block the person making the posts, and do not reply.
- If you know your child is being bullied, report it immediately so the school can begin their investigation.



SASQUATCH BUS EXPECTATIONS

Seatbelt on, face forward, aisle clear

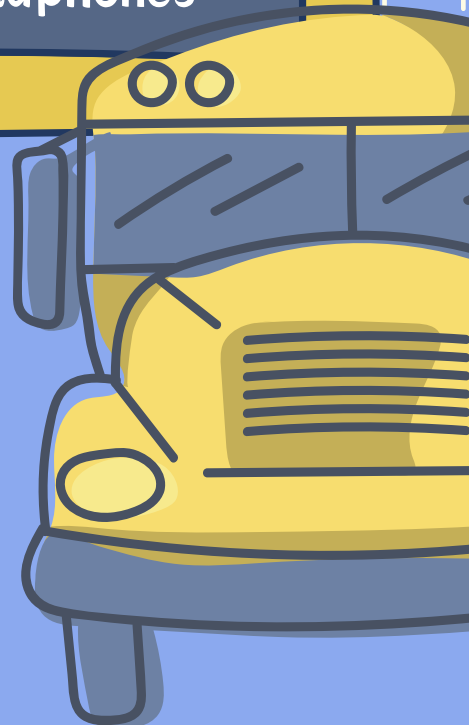
Voice levels

0 - Silence, 1 - Whisper, 2 - Calm voice tone

Respectful language

Hands and feet to self

Cell phones - sound off or use headphones



testing INFO

How to Access the Family Portal



The Family Portal provides a central location for your student's assessment results.

The Family Portal can be used to:

- access your student's results for FAST Progress Monitoring testing, EOCs, Statewide Science, Retakes, the Florida Civic Literacy Exam, and the Florida Alternate Assessment.
- access prior statewide assessment results.
- print score reports.

How can I access the Family Portal?

- At the Florida Statewide Assessments Portal:
<https://ffast.org>
- Or at the direct link:
<https://fl-familyportal.cambiumast.com/>

What information do I need to log in to the Family Portal?

- Your student's unique 6-digit access code (found in HAC under the Registration tab).
- Your student's date of birth.
- Your student's first name as it appears on their official school record.

What information can I find on the Family Portal?

- Your student's results from Fall 2020 through present.
- Your student's Individual Student Reports with interpretative guides.
- Glossary
- FAQs
- Performance Levels

Where do I get the Access Code?

The code can be found in the Home Access Center (HAC) under the Registration tab. The code will be located on the right side of the page under Additional Information.



ST. JOHNS COUNTY SHERIFF'S OFFICE



ROBERT A. HARDWICK, SHERIFF

SCHOOL CROSSING GUARDS -vs- PUBLIC SERVICE ASSISTANT



SCHOOL CROSSING GUARDS
School Crossing Guards guide students, families, pedestrians and bicyclists across busy streets in school zones.



PUBLIC SERVICE ASSISTANTS
Public Service Assistants maintain the flow of traffic by directing motorists safely through school zones.



ST. JOHNS COUNTY SHERIFF'S OFFICE



ROBERT A. HARDWICK, SHERIFF

SCHOOL CROSSING GUARDS

We see them but, what do they do?

A School Crossing Guard (SCG) is a person who helps children cross the street safely and ensures the safety of pedestrians and drivers. They receive training from the Florida Department of Transportation and they are certified by the State of Florida.

Some responsibilities include:

- Helping children cross the street
- Teach students the importance of bicycle helmets
- Remind drivers of the presence of pedestrians





St Johns County School District
Guest Teacher (substitute)
posting in AppliTrack Application
System on our district website
December 16th–January 3, 2025.

SJCSD is ready to hire Guest Teachers who are ready to make a difference for students in Pre-K - 12th grade.

Daily hourly rate \$15.00. Florida certified teacher or retired S.J.C.S.D teacher is \$18 hourly rate.

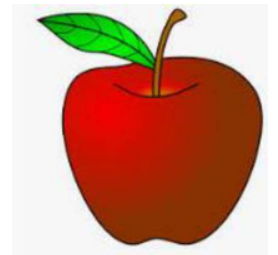
The Guest Teacher role provides:

- Opportunity to put your degree to work.
- Flexibility – you pick the days and schools.
- An opportunity to work with diverse student populations.
- An opportunity to contribute to the learning and development of the students in our school district.

Come join our team.

Applicants who hold a minimum of an Associate degree or equivalent of 60 credits or higher and who are 20 years of age or older are eligible to apply. Preferences given to applicants that have graduated or are graduating from an Education program. All applicants will be considered for strong teaching potential, above average references, experience in critical need areas, and/or an education degree.

For full job description, requirements and to apply online,
Visit: <https://www.applitrack.com/stjohns/onlineapp/>
Questions? Please call 904-547-7636 SmartFind Helpdesk or
application questions call AppliTrack helpdesk 547-7631.



\$10 FROM EACH NEW ENROLLMENT GOES TO LAKESIDE ACADEMY

OFFER EXPIRES 12/13/24



GET YOUR BJ'S MEMBERSHIP CARD



NEW MEMBER Offer:

Only \$20

**12 months for the Club Card
(Regularly \$55)**

<http://www.bjs.com/lakesideacademy>

Join today
for only

\$20*



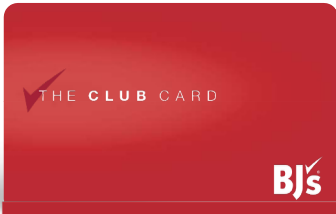
REG.
\$55

The Club Card Membership for 1 year with BJ's Easy Renewal®

New members only.

To join or renew today, call 800-313-8887
and reference group promo code:

8 1 3 0 3 9



The Club Card
Membership
with BJ's Easy
Renewal®



The Club+ Card
Membership
with BJ's Easy
Renewal®

The Club+ Card members receive 5¢ off/gal.‡ at BJ's Gas® every day and earn 2% back† in rewards†† on most BJ's purchases.

New members The Club+ Card Membership: \$60*

when you purchase a 1-year The Club+ Card Membership.

Existing members:

Renew The Club Card Membership for \$50.*

Renew The Club+ Card Membership for \$100.*

New members: \$10 will go to your organization. Renewing members: \$5 will go to your organization.

BJ's Membership Sales Representative: Kim Sbrogna.

LAKESIDE ACADEMY

Email: Questions, email ksbrogna@bjs.com

Offer expires: DECMEBER 13, 2024

New Members can sign up online.
www.bjs.com/lakesideacademy

You acknowledge BJ's membership terms are available in-club and on Bjs.com/terms and agree your membership is subject to those terms. You agree to receive electronically any disclosures, agreements, communications, and notices from BJ's and to maintain accurate contact information with BJ's.

Your membership expires on the last day of the month and year shown on your register receipts and on your "My Account" page on Bjs.com. Memberships renewed within two months after expiration will be extended 12 months from the expiration date. Memberships renewed more than two months after expiration will be extended for 12 months from the last day of the month of renewal, provided that BJ's reserves the right to require you to enroll in a new membership in lieu of renewing your expired membership.

*Offer is not valid in-club or online, may not be combined with other offers, not redeemable for cash and nontransferable. Plus sales tax where applicable. Offer is contingent upon your enrolling in BJ's Easy Renewal, and you authorize BJ's to charge any payment method BJ's has on record for your membership, an annual recurring charge in the amount of the then-current membership fee for all memberships on your account, plus sales tax if applicable, starting the first day of the month your membership expires, without further notice except as required by law. Your authorization is valid until you cancel your participation in the BJ's Easy Renewal program. In order to renew at the Corporate Partnership Program discounted membership offer, you must renew via your Membership Sales Representative. For full BJ's Easy Renewal terms, visit Bjs.com/terms. To manage your participation in BJ's Easy Renewal, visit "My Account" on Bjs.com, visit the member services desk in-club, or call BJ's Member Care at 800-BJS-CLUB. Expires: 12 /13 /24

†The Club+ Card members earn 2% back in rewards on eligible purchases of goods and services in-club at BJ's front-end registers, on Bjs.com, or in the BJ's app (minus any redeemed rewards, returns, refunds, or credit adjustments) when they scan their membership card for these purchases, **unless** the primary member or the member making the purchase is a cardholder in the BJ's One® Mastercard® program, in which case the member will **only** earn rewards in accordance with the BJ's One® Mastercard® program rewards terms (see Bjs.com/bjsoneterms). Rewards earned may not exceed \$500 in any 12-month period.

‡Eligible purchases exclude eye exams, shipping, sales tax, bottle deposits, alcoholic beverages, cigarettes and tobacco-related products, lottery tickets, gift cards, propane, BJ's Gas, online optical purchases, membership fees and add-ons, warranties and protection plans, BJ's services provided by third parties (e.g., BJ's Travel®), and BJ's B2B and BJ's Global Sales transactions. See Bjs.com/terms for information on excluded services. Eye exams and online optical purchases are not eligible for reward redemption.

††Rewards are yours for the life of your The Club+ Card Membership – they will not expire while your membership remains active and in good standing. Rewards earned may not exceed \$500 in any 12-month period. Must have a minimum balance of \$10 in rewards to redeem. Minimum eligible purchase amount is \$10 at BJ's checkout.

‡‡The Club+ Card members receive an instant discount of 5¢ off each gallon of fuel purchased at BJ's Gas when they scan their membership card for these purchases, **unless** the primary member or the member making the purchase is a cardholder in the BJ's One® Mastercard® program, in which case the member will **only** receive an instant discount at BJ's Gas in accordance with the BJ's One® Mastercard® program rewards terms (see Bjs.com/bjsoneterms). BJ's Gas purchases are not eligible purchases and do not earn rewards. For MD and NJ transactions, discount will be applied after sale, before payment. Subject to applicable state law restrictions.

The rewards program is provided by BJ's Wholesale Club, Inc. and its terms may change at any time. For full rewards terms and conditions, please see Bjs.com/terms.

**20 item per transaction limit. Only available for purchases up to \$750. Paper coupons not available. Cannot be used to purchase gift cards, alcohol, cigarettes, propane, appliances, fireworks, security-protected items or tires.

‡‡‡BJ's Same-Day Delivery is not available in all ZIP codes. Log in to your account to confirm availability.



FORTIFYFL

SUSPICIOUS ACTIVITY REPORTING APP

FortifyFL is a suspicious activity reporting tool that allows you to instantly relay information to appropriate law enforcement agencies and school officials.



#FORTIFYFL
GETFORTIFYFL.COM



DOWNLOAD
NOW



FLORIDA DEPARTMENT OF
EDUCATION
fldoe.org

